

Index

Sl. No	Title	Pg.No
1.	Summary sheet of IT infrastructure	1
2.	Internet Information, Intranet Information	2
3.	Access Points	3
4.	Server Information	4
5.	Desktop Information	6
6.	Laptop Information	10
7	Printer Information	11
8.	UPS Information	15
9.	Software Information	22
10.	Network Information	24

Summary sheet of IT infrastructure

Sl. No	Item	Quantity
1	Internet	560Mbps Leased Line 1:1
2	Intranet	10Gbps Backbone
3	Antivirus	Sophos intercept X 2000 licences
4	Servers	47
5	Workstation	21
6	Desktops	2309
7	Laptops	74
8	Printers	125
9	Access Points	94(Campus)+125(Hostel)
10	UPS	59
11	Projectors/TV	163
12	Telephones	125
13	CC Cameras	323+20NVR
14	Firewall	SOPHOS XG450

Internet Information

Sl. No	Name of ISP	Bandwidth
1	BSNL	160Mbps Leased Line (Ratio 1:1)
2	TATA	200Mbps Leased Line (Ratio 1:1)
3	TATA	200Mbps Leased Line (Ratio 1:1)

Intranet Information

- Campus backbone is 10Gbps optical fiber cable (OFC)
- Department internal LAN is 1Gbps OFC as well as CAT6

Access Points

- **Access point controller unit Aruba controller 7210**
- **94 Aruba access points have been installed in campus.**
- **125 Numbers of D-Link DAP 2230 and Engenius access points have been installed in hostels.**

Sl. No	Location	No. of AP's
1	Ladies Hostel	58
	Saraswati	15
	Sharavati	08
	Shalmala	23
	Vindya	12
2	Boy's Hostel	67
	Jr.Boy's	16
	Senior A	23
	Senior B	20
	Senior C	8
3	Campus	94
	Main Building-1	16
	Main Building-2	7
	E&C Building	8
	C-Lite Building	19
	RHK LHC Building	8
	BioTech Building	13
	Architecture Building	6
	Mechanical Building	11
	Civil Building	2
	Scholar House	4

Server Information

Sl No.	Department	Server Model	Quantity	Status
1	A & R (HOD)	HP Proliant ML350 G6	2	On
2	A & R (HOD) (W)	Dell Pricision 7920	1	On
3	A & R (W)	HP Z240	3	On
4	A & R (W)	HP Z6	1	On
5	Exam Cell	Dell Power Edge R210	1	On
6	Exam Cell	HP Proliant DL 180 G6	1	On
7	Mech (Mechatronics)	HP Proliant DL380e G8	1	On
8	Mech (New caed lab)	Dell Pricision Power Edge	1	On
9	Civil Staff room (W)	Dell Pricision Tower 3620	1	On
10	Old Caed lab(Infocell)	HP Proliant DL 160 G6	1	Dead
11	E & E Lab	HP Proliant DL160 G8	1	On
12	MCA	HP Proliant DL 360 G5	1	On
13	MCA	HP proliant DL 120 G6	1	On
14	MCA	HP Proliant DL 360 G5	1	On
15	MCA	HP Proliant ML 370	1	On
16	MCA	HP Proliant DL 350 G6	1	On
17	E & C Automative (W)	HP Z6 Zeon	1	On
18	E & C Micro Antena (W)	HP Z6 Zeon	1	On
19	E & C VLSI	HP Proliant ML 350 G6	1	On
20	E & C VLSI	HP Proliant DL 380 G8	1	On
21	E & C VLSI	Dell Power Edge R210	1	On
22	E & C VLSI	HP Proliant DL 180 G6	1	On
23	E & C VLSI	Dell Power Edge R520	1	On
24	E & C CVG (W)	HP Z6 Zeon	1	On
25	E & C CVG	Dell Pricision 7920	1	On
26	E & C (dst.ihs)	Dell 440 Intel Xeon Silver 4210R	1	On
27	Arch	Dell Power Edge R210	1	On
28	SOCSE	HP Proliant DL 380 G8	1	On
29	SOCSE	HP Proliant ML 350	1	On
30	SOCSE	HP Proliant DL 160 G8	1	Standby
31	SOCSE(ISE)	HP Proliant DL 380e G8	1	On

32	SOCSE (HPC)	Dell Power Edge R520	1	On
33	SOCSE (HPC)	DGX	1	On
34	SOCSE (Cloud)	Dell Power Edge R430	2	On
35	SOCSE (Cloud)	HP Proliant DL 160 G9	1	On
36	SOCSE (Cloud)	Dell Power Edge R440	4	On
37	SOCSE (AI) (W)	HP Z440	2	On
38	SOCSE (AI) (W)	HP Z8	1	On
39	SOCSE (AI) (W)	HP Z6	1	On
40	SOCSE (AI)	Customised Server	2	On
41	SOCSE Staffroom (W)	HP Elite Desk	4	On
42	Mech Staffroom (W)	Masterbox K501L	4	On
43	Infocell	HP Proliant DL 160 G8	1	On
44	Infocell	HP Proliant DL 180 G8	1	On
45	Infocell	Dell Pricision R520	2	On
46	Infocell	HP Proliant DL 120	1	On
47	Infocell	HP Proliant DL 380	1	Standby
48	Infocell	Dell Power Edge R210	1	On
49	Data Centre	HP Proliant DL 160 G8	2	On
50	Data Centre	Dell Power Edge R520	1	On
51	Data Centre	HP ProliantDL 380e G8	1	On
Servers 47 And Workstation 21				

Desktop Information

Sl.No	Dept	Model	Processor	RAM	HDD	Qty
1	Arch (78)	HP DX 2481	Intel C2D	4GB	250GB	10
2		Lenovo Think Centre	Intel C2D	4GB	160GB	20
3		Lenovo	Intel Core i3	4GB	160GB	3
4		Lenovo Think Centre	Intel C2D	3GB	250GB	3
5		Lenovo H50:50	Intel Ci3	4GB	500GB	7
6		Dell	Intel Ci3	4GB	500GB	8
7		Dell Vostro	Intel Ci3	4GB	500GB	2
8		Dell Vostro	Intel Ci5	8GB	1TB	25
9	A&R (125)	HP 3090MT	Intel Ci3	8GB	500GB	30
10		HP 3330MT	Intel Ci3	8GB	500GB	25
11		HP 3330MT	Intel Ci3	8GB	500GB	30
12		Lenovo	Intel Ci3	8GB	500GB	40
13	BT (41)	HP 280 G1MT	Intel Ci3	4GB	500GB	14
14		HP Pro 3330MT	Intel Ci3	4GB	500GB	16
15		HP DX 2480	Intel C2D	2GB	250GB	6
16		IBM Nervista A30	Pentium 4	128MB	40GB	1
17		Lenovo Think Centre	Intel C2D	1GB	250GB	2
18		Compaq Presario	Pentium 4	512MB	40GB	2
19	CEER (25)	HP 5041	Intel Ci3	4GB	500GB	20
20		HP 3501	Intel Ci5	4GB	500GB	1
21		Lenovo H50:50	Intel Ci3	4GB	500GB	1
22		Lenovo 60A	Intel Ci3	4GB	500GB	1
23		Lenovo H50:50	Intel Ci3	4GB	500GB	1
24		Dell Vostro 3669 MT	Intel Ci3	8GB	1TB	1
25	CSE (570)	Dell Vostro 3650MT	Intel Ci3	4GB	500GB	60
26		HP Pro 6300MT	Intel Ci7	8GB	500GB	41
27		HP 280 G1MT	Intel Ci3	4GB	500GB	40
28		HP Pro 3330MT	Intel Ci3	4GB	500GB	50
29		Lenovo Think Centre	Intel C2D	4GB	320GB	50

30		HP Pro 3090	Intel C2D	4GB	320GB	18
31		HP DX 2480	Intel C2D	2GB	250GB	40
32		HP DX 2480	Intel C2D	2GB	250GB	30
33		Dell Vostro	Intel Ci3	8GB	1TB	20
34		Lenovo Thinkcentre M58	Intel C2D	4GB	320GB	6
35		HP Pro 3330MT	Intel Ci3	4GB	500GB	50
36		Lenovo G500	Intel Ci3	2GB	500GB	2
37		HP ProDesk 400MT	Intel Ci7	8GB	500GB	20
38		HP Desktop 280 G1	Intel Ci3	4GB	500GB	40
39		HP Pro 6300MT	Intel Ci7	8GB	500GB	25
40		HP 280 G2 MT	Intel Ci7	8GB	500GB	25
41		HP DX 2300	Intel C2D	1GB	250GB	22
42		HP Pro 6300MT	Intel Ci7	8GB	500GB	1
43	Civil (94)	HP Pro 3330MT	Intel Ci3	4GB	500GB	24
44		HP Pro 3330MT	Intel Ci5	4GB	500GB	6
45		Dell Vostro	Intel Ci3	4GB	500GB	4
46		Lenovo	Intel Ci3	4GB	500GB	2
47		HP Compaq	Intel Ci3	4GB	500GB	2
48		HP Pro 3330MT	Intel Ci3	4GB	500GB	3
49		HP Pro 3090MT	Intel Ci3	4GB	500GB	1
50		Dell Vostro	Intel Ci3	4GB	500GB	2
51		Dell Vostro	Intel Ci3	8GB	1TB	50
52		E & E (111)	HP 280 G1MT	Intel Ci3	4GB	500GB
53	Dell Vostro 3650MT		Intel Ci3	4GB	500GB	12
54	HP Pro 3330MT		Intel Ci3	4GB	500GB	5
55	Dell Vostro 3800MT		Intel Ci3	4GB	500GB	5
56	Lenovo Edge 72		Intel Ci3	4GB	500GB	5
57	HP Compaq DX2480		Intel C2D	2GB	250GB	5
58	HP Compaq DX2480		Intel C2D	2GB	250GB	10
59	Lenovo Think Centre		Intel C2D	2GB	160GB	5
60	Lenovo Think Centre		Intel C2D	1GB	250GB	4
61	Dell Vostro		Intel Ci5	8GB	1TB	30
62	Dell Vostro	Intel Ci3	8GB	1TB	20	
63	E & C (561)	Lenovo 3000J	AMD Sempron 3000	512 MB	80GB	10

64	Lenovo Think Centre	Sempron 3000	512MB	80GB	6
65	HP Compaq DX2480	C2D E7300	1GB	160GB	10
66	HP Compaq DX2480	C2D E7300	1GB	160GB	20
67	HP 3090MT	C2D E7300	4GB	320GB	10
68	Lenovo 1607-B9Q	Intel Ci3 2100	4GB	500GB	10
69	HP Pro 3330MT	Intel Ci3 2100	4GB	500GB	20
70	HP Elite 7000	Ci5-750	4GB	500GB	23
71	HP Pro Desk 400MT	Ci7 4770	500GB	500GB	10
72	HP Pro 3330MT	Ci3 2100	4GB	500GB	5
73	Lenovo 1607-B9Q	Intel Ci3 2100	4GB	500GB	7
74	HP Pro Desk 400MT	Intel Ci7	500GB	500GB	10
75	Delloptiplex 3020MT	5th Gen Intel Ci7 4790	8GB	500GB	25
76	HP ProDesk 400MT	Intel Ci7	8GB	500GB	10
77	HP Pro 6300MT	Intel Ci3	4GB	250GB	4
78	HP Compaq DX 2480	Intel C2D	1GB	160GB	10
79	HP 3090MT	Intel C2D E7300	4GB	320GB	5
80	Lenovo 1607-B9Q	Intel Ci3 2100	4GB	500GB	3
81	HP Pro 3330MT	Intel Ci3 2100	4GB	500GB	5
82	HP Pro 3330MT	Intel Ci3 2100	4GB	500GB	2
83	Assembled	Dual Core 3rd Gen G2010	4GB	500GB	15
84	HP 3090MT	Intel C2D E7300	4GB	320GB	2
85	HP Compaq DX 2480	Intel C2D E7300	1GB	160GB	2
86	Dell Vostro	Intel Ci3	8GB	1TB	150
87	HP Pro 3330	Intel Ci7	12GB	500GB	25
88	HP Pro 3330	Intel Ci3	4GB	500GB	10
89	HP Brio BA410	Intel Pentium III	64MB	20GB	1
90	Compaq Presario	AMD Athlon	128MB	40GB	1
91	HP Make DX2480	Intel C2D	2GB	500GB	25
92	HP Pro 3330	Intel Ci3	4GB	500GB	25
93	HP 202 G1 MT	Intel Ci3	4GB	500GB	30
94	Dell Vostro 3800	Intel Ci3	4GB	500GB	25
95	Dell Vostro 3801	Intel Ci4	4GB	500GB	35

96	MBA (78)	HP DX2480	Intel Dual Core	2GB	500GB	15
97		HP DX2480	Intel Dual Core	2GB	500GB	10
98		HP Pro 3090	Intel C2D	2GB	500GB	5
99		HP Pro 3330MT	Intel Ci3	4GB	500GB	10
100		HP Pro 3330MT	Intel Ci3	4GB	500GB	10
101		Dell Vostro D55KX52	Intel Ci3	4GB	500GB	8
102		HP 280 G2 MT	Intel Ci3	4GB	500GB	20
103	MCA (163)	HP Desktop 280 G1	Intel Ci3	4GB	1TB	34
104		HP Pro 3330	Intel Ci3	4GB	500GB	44
105		HP DX2480	C2D	2GB	500GB	15
106		Lenovo Think Centre E6300	C2D	1GB	160GB	7
107		Lenovo Think Centre E6300	C2D	1GB	160GB	13
108		Dell Vostro	Intel Ci3	8GB	1TB	50
109	Mech (364)	Dell Vostro	Intel Ci3	4GB	500GB	80
110		Lenovo	Intel Ci3	4GB	500GB	42
111		HP 3090MT	Intel Ci3	4GB	300GB	80
112		HP 280 G1	Intel Ci5	4GB	500GB	40
113		HP Computer 208	Intel C2D	4GB	250GB	21
114		HP	Intel Ci3	4GB	500GB	1
115		HP	Intel Ci5	4GB	500GB	40
116		HP 3090	Intel Ci3	4GB	300GB	30
117		Dell Vostro	Intel Ci5	8GB	1TB	30
118	Office (28)	Dell Vostro 3669	Intel Ci5	4GB	500GB	5
119		Hp Pro-3330 MT	Intel Ci5	4GB	500GB	5
120		Hp 280 G2 MT	Intel Ci3	4GB	500GB	5
121		Hp Pro 6300 MT	Intel Ci7	8GB	500GB	8
122		Hp Pro3090 MT	Intel C2D	4GB	500GB	2
123		Hp Dr-2480 MT	Intel C2D	4GB	500GB	3
124	Infocell (9)	Dell Vostro 3669 MT	Intel Ci5	8GB	1TB	5
125		Hp 280 G2 MT	Intel Ci3	4GB	500GB	4
126	Examcell (129)	Hp 280 G2 MT	Intel Ci3	4GB	1TB	9
127		Thinkclient				120

Laptop Information

Sl. No	Dept	Model	Processor	RAM	HDD	Qty
1	Arch	HP Pavilion 15				1
2	CEER	Lenovo G51	Intel Ci3	4GB	500GB	1
3	CSE	Apple Mac Mini MD387	Intel Dual Ci5	4GB	500GB	5
4		Toshiba NB510	Intel Atom N2600	2GB	320GB	3
5	CV	Lenovo	Intel Ci3	4GB	500GB	2
6	E & C	HP Pro Book 4411 S	Intel C2D T6570	3GB	500GB	1
7		Toshiba Satellite C640-X4012	Intel Ci5 3rd Gen	4GB	500GB	1
8		HP Pro Book 4411 S	Intel C2D T6570	3GB	500GB	1
9		Assus Mini 1015 E	Intel Cleron CD	2GB	320GB	2
10		Compaq Presario 31 TU	Intel Celron	512M B	40GB	1
11		HP 503	Intel Ci5	8GB	1TB	1
12		Apple Mac Mini MD387	Intel C2D	2GB	250GB	1
13		Apple Mac Mini MD387	Quad Ci7	4GB	500GB	1
14	ISE	Apple Macbook Pro MD103HN/A	Quard Ci7	4GB	500GB	1
15		Asus X200MA `	Intel Celeron	2GB	500GB	2
16		Lenovo	Intel Ci3	4GB	500GB	2
17		Dell Alienwre M 15XBLK	Intel Ci7	16GB	1TB	1
18	IT	Lenovo	Intel C2D	2GB	160GB	2
19		Dell Vostro 1450	Intel Ci3	2GB	500GB	1
20	MBA	HP SC 120 TX	Intel Ci3	4GB	500GB	1
21	IT	Dell Inpiron 3541	AMD Dual Core	4GB	500GB	2
22	MCA	HP Probook 4520	Intel Ci3	4GB	500GB	1
23		Compaq 510 HP	C2D	2GB	500GB	1
24		Compaq Presario V2381	Dual Core	1GB	256GB	1

Printer Information

Sl.No	Dept	Printer	Location	Cartridge
1	Arch (6)	Hp Laserjet 1020 plus	HOD	12A
2		Hp 1415 fnw	Gitanjali	
3		Canon 4045	Library	
4		Hp Laserjet M1136 MFP	K V Nagmule	88A
5		Hp Laserjet M1522 NF	Savita	36A
6		Hp Designjet T790		
7	Auto (2)	Sharp 5516	Dept Office	AR020BT
8		Hp Laserjet M1530 MFP	HOD	78A
9	Auto & Robotics (2)	Hp Laserjet 1010	HOD	12A
10		Hp Laserjet P2055D	Office	53A
11	BT (3)	Hp Laserjet 1320	Dept Office	49A
12		Sharp AR 5618	Dept Office	
13		Brother HL-L23210	HOD	TN-2365
14	C & M Cell	Sharp AR-5516D	Common	
15	CEER (7)	Sharp AR 6020D	Dept Office	
16		Hp Laserjet 1020	Staffroom (Preeti)	12A
17		Hp Laserjet 1020	Exporation Lab	12A
18		Hp Laserjet P1108	HOD	88A
19		Hp Laserjet 2014	A V Kulkarni	53A
20		Hp Laserjet M1005	Vineet	
21		Hp Laserjet 2015D	CVD Laboratory	49A
22	Civil (5)	Hp Laserjet Pro M202DW	CADD Lab	88A
23		Hp	M R Patil	
24		Hp Laserjet P1606DN	Office	78A
25		Hp Laserjet P1606DN	HOD	78a
26		Hp Scanjet G3110	CAED Lab	
27	CMS	Hp Laserjet M1136 MFP	HOD	88A
28	Consultancy cell	Hp Laserjet M1005 MFP	Nigappa	MC15309A3-12H
29	CRS (FM)	Hp Laserjet 1022	Director Cabin	12A

30	CSE (6)	Epson STYLUS,CX2800	Dept Lib N/W	-
31		Sharp 5620D	Dept Office	
32		Canon F158300	HOD	326 starter
33		Hp Laserjet 2420D N/W	Server room	11A
34		Hp Laserjet P1108	Staffroom	88A
35		Hp Laserjet P1108	Staffroom	88A
36	Data Center	Hp Laserjet Pro M202DW		88A
37	Dean (8)	Hp Laserjet P1108	Vilas Purohit	88A
38		Hp Scanner G2410	Vilas Purohit	
39		Canon LBP2900B	Pooja (CA)	JIL 3211
40		Hp Laserjet 1020 plus	Samuel	12A
41		Hp Scanner G2410	Samuel	
42		Konica Minolta Magicolour 1680MF	Samuel	
43		Hp Scanner 200	Bharathi	
44		Sharp AR-5620D	Vilas Purohit	
45	Gymkhana (2)	Hp Laserjet 1020 plus	Sushila	12A
46		Hp Laserjet M1136 MFP	HOD	88A
47	Hum (4)	Sharp ARM-420U	Common	
48		Hp Laserjet P2035	Common	05A
49		Hp Laserjet P1566	Pooja	78A
50		Canon Scanner LID120	Mirajkar	
51	Hum-Step (3)	Hp Laserjet M1136 MFP	Shivpooja	88A
52		Hp Laserjet 1020 plus	Kotabagi	12A
53		Hp Deskjet 4535	Kotabagi	Colour
54	IP (6)	Hp Laserjet 1536 DNF MFP	Amaresh	78A
55		Hp Laserjet P2055D	Office	05A
56		Hp Laserjet M1005	HOD	12A
57		Canon LBP2900B	Dr. S B Burli	12A
58		HP Laserjet P1008	CAE Lab	88A
59		Hp Laserjet M1005 MFP	J M Kandal	12A

60	ISE (4)	Hp Laserjet M202 DW	Staffroom 1	88A
61		Hp Laserjet P1108	Chikkerur	88A
62		Sharp AR-5620D	Dept Office	
63		Hp Laserjet 1536 DNF MFP	HOD	78A
64	IT (4)	Hp Laserjet P2015	Office	53A
65		Hp Scanjet G2410		
66		Hp Laserjet P1007	HOD	88A
67		Sharp AR-5620N	HOD	
68	KLETECH Office (4)	Hp Laserjet 1020 plus	Sunita D	12A
69		Canon LBP2900B	Shivakumar	103/303/703
70		Hp Laserjet M1005 MFP	Uma	12A
71		Hp Deskjet 3635	Kotabagi	Colour
72	Library (4)	Epson TMU 220D M188D	Issue Counter	ERC-38B (Ribbon)
73		DR 400 (5 No)		
74		WEP DP330 N/W	-	
75		Hp Laserjet 1018	Staffroom	12A
76		Sharp AR 6020	Staffroom	
77	Maths	Hp Laserjet P2035	HOD	05A
78	MBA (7)	Sharp AR5516N		
79		Hp Laserjet CT1025	HOD	Colour
80		Hp Laserjet P10505	Nagaraj	36A
81		Hp Laserjet P2055D	Shwetha	05A
82		Hp Scanjet G3110	Office	
83		Hp Laserjet 2055DN	Shivanagouda Patil	05A
84		Hp Laserjet Pro 400 M401D	CADD Lab	80A
85	Mech (8)	Sharp 6020D	Common	
86		Hp Laserjet M1136 MFP	HOD	88A
87		Hp Officejet K7108	HOD	Colour
88		Hp Laserjet 1320	CIM Lab	49A
89		Hp Laserjet M1136 MFP	M B Gorwar	88A
90		Hp	Girish	
92		Hp Scanjet 200	Office	
91		Hp Laserjet P1108	New CAED Lab	CC388A

93	Markerspace (Mech)	Canon LBP2900B	Common	103/303/703
94	Office (8)	Canon LBP6230DN	Halawai	Canon-326
95		Hp Laserjet 1020 plus	Sunil	12A
96		Hp Laserjet M1136 MFP	Santosh	88A
97		Hp Laserjet Pro MFP M126NW	Ajit	88A
98		Hp Laserjet P1108	Sunita G	88A
99		Hp Laserjet P1606DN	Basu	278A
100		Canon LBP 2900B	Shanthkumari	12A
101		Sharp AR-M452U	First Yr C-Lab	
102	PA to Principal	Hp Laserjet Pro MFP M126NW	Shilpa	88A
103	PA to VC (2)	Hp Laserjet 3050	Medha	12A
104		Hp Laserjet Pro 400 Colour M451DN	Medha	305A
105	Placement (2)	Hp Laserjet Pro MFP M226DN	Office	88A
106		Hp Laserjet M1005 MFP	Kerure	12A

INFOCELL

UPS Information

Sl.No	Dept.	UPS Make	KVA	Date of Purchase	Vendor	Warranty	Battery Tubular (AH)	Battery SMF (AH)	No. of batteries	Date of Purchase	Vendor	Warranty
1.	ARCH 1	Cosmic	7.5	14-09-15	Connect communication	2Yrs		42	10	14-08-18	Exide,Cosmic ups.	2Yrs
2.	ARCH 2	Cosmic	3.5	00-04-16	Adythy Technologies, Hubli		100		4	14-09-18	EXIDE, Battery Care Point.	4 Yrs
3.	AUTO 1 to (HUM)	Cosmic	3	27-07-15	Adythy Marketing	3Yrs		26	8	27-07-15	EXIDE EP Power safe	
4.	AUTO 2 to (MATHS)	Cosmic	7.5	26-05-14	Adythy Marketing			26	10		Quanta, Aditya Enterprises	
5.	A & R Lab.	Foxin	3	24-11-17	Techno power Hubli	3 Yrs		26	6	24-11-17	Techno power Hubli	
6.	BT 1	Powernet	10	15-11-07	Techno power Hubli	AMC(1/10/19)		24	16	15-03-13	Exide Power safe NXT	
7.	BT AUDITORIUM	Powernet	3	10-10-19	Techno power Hubli	2Yrs		42	6	10-10-19	Amaron Quanta, Techno power	2Yrs
8.	BT 2	VERY OLD - no name	2	25-02-05	Naveen Communications			65	4	27-12-14	Exide Power safe NXT	1Yr
9.	BT 3	Powernet	3	01-12-11	Techno power Hubli			65	6	17-07-15	Exide Power safe , Vinayak Enterprises	1Yr

INFOCELL

10.	BT Switch Room	Microtech	1	26-09-17	Techno power Hubli	2Yrs		26	3	26-09-17	Techno power Hubli	2Yrs
11.	CHEM	Amaron	1.5	14-03-13	Techno power Hubli		80		2	14-03-13	Exide, Technopower Hubli	
12.	Civil Cad Lab	Powernet	10	28-02-14	Techno power Hubli	3Yrs AMC(1/10/19)		42	16	24-11-17	Amaron Quanta Techno power Hubli	
13.	Civil New DS Lab	PNS (from Lib)	10		Techno power Hubli			42	16	15-08-17	Amaron Quanta Techno power Hubli	2Yrs
14.	Civil PG Lab(Studio)	Cosmic(From EC Antena Lab)	6 off_line	12-05-15	Connect communication		60		6	12-03-19	Ojas, Techno power Hubli	2 Yrs.
15.	SMSR	PNS{From Clite LIB }	10		Techno power Hubli			42	16	18/08/2019	Amaron Quanta, Techno power Hubli	2Yrs
16.	CMS	Cosmic	7.5					42	10		EXIDE Power safe	
17.	CSE	Cosmic	40	00-10-15	Connect communication			100	20	08-09-18	QUANTA, Techno power Hubli	2Yrs
18.	CSE(UD AY SIR)	Console	6	18-01-18	Connect communication/ Dhaneshwari enter prices.			26	16	18-01-18		
19.	CSE(CHIKKERUR)	Emerson	10	22-10-18	Techno power Hubli	3 Yrs.		26	20	22-10-18	Techno power Hubli	2Yrs

INFOCELL

20.	CSE (Narayan Sir)											
21.	Ceer	Powernet	5	05-08-17	Techno power Hubli	2Yrs		26	10	05-08-17	Techno power Hubli	2Yrs
22.	CTIE	Techser	20	10-12-16	Techser Power PVT LTD. Bangalore	2Yrs(AMC 20/05/19)		65	20	10-12-16	Amron, Techser power	2Yrs
23.	EC DS Lab	Powernet	15	30-08-13	Techno power Hubli			42	20	15-08-17	Amaron Quanta, Techno power Technologies	2Yrs
24.	EC Cmos Lab	Cosmic	10	11-08-11	Cosmic Microsystem Bangalore			42	20	15-08-17	Amaron Quanta Techno power Hubli	2Yrs
25.	EC ED Lab(2)	Cosmic	7.5	09-09-15	Connect communication	2Yrs		42	10	09-09-15	Exide, Connect Communications	2Yrs
26.	EC Near Research Lab	Cosmic	6		Connect communication	2Yrs	60		6		Connect communication	2Yrs
27.	EC Automotive Lab	DB-HNUK-310	10	17-09-07	Techno power Hubli			42	10	02-11-11	Amaron Quanta	
28.	EC Antena Lab	Alpha	30	01/12/2020	Techno power Hubli	2 Yrs		42	20	01/12/2020	Amaron Quanta, Techno power Hubli	2 Yrs
29.	EC Power house	Techser	20	10-12-16	Techser Power PVT LTD. Bangalore	2Yrs(AMC 20/05/19)		65	20	10-12-16	Amron, Techser power	2Yrs

INFOCELL

30.	EC Power house	Cosmic	10	08-11-11	Cosmic Microsystem Bangalore			42	20	18-07-15	Exide , Connect Communications	2Yrs
31.	EC Server Room	Powernet	30	05-08-17	Techno power Hubli	2Yrs		65	30	05-08-17	Techno power Hubli	2Yrs
32.	EE Comp. Lab	Green Power	6	23-11-09	Techno power Hubli			26	16		Techno power	2Yrs
33.	EE Machine Lab	Powernet	6			(From Robotics)		26	16		Techno power	2Yrs
34.	EE New Computer Lab	Powernet	20	05-08-17	Techno power Hubli	2Yrs		65	20	05-08-17	QUANTA, Techno power Hubli	2Yrs
35.	Exam Cell	Powernet	5	19-02-14	Techno power Hubli			26	16+1		Powersafe NXT	
36.	Exam Cell Nandisir	Powernet	7.5	26-11-10	Techno power Hubli			26	16		Amaron Quanta	
37.	Exam Server room to Arch TVS	Powernet	7.5	05-03-13	Techno power Hubli			26	16		Powersafe NXT	
38.	Humanities	Cosmic	10					42	20		Power safe NXT	
39.	Infocell	Emerson	3					42	8	30-05-15	Amaron Quanta, Techno power	

INFOCELL

40.	Infocell	Green Power	6	22-12-2005	Techno power Hubli		150		16	28-12-18	Ojas, Techno power	Distil wtr toper up 25/01/21
41.	ISE	EATON	30	23-06-14	EATON, Bangalore	2Yrs		42	30	05/12/2020	QUANTA, Techno power Hubli	2Yrs
42.	IT 3	Cosmic	6	27-03-15	Connect communication		65		6	27-03-15	SF Sonic, Connect Communications	
43.	LHC	DB-LN-3300	30	23-03-09	Techno power Hubli			42	30	20/03/19	Techno power Hubli	2Yrs
44.	Main Building Basement	Powernet	7.5	26-10-16	Techno power Hubli		100		10	26-10-16	S F Sonic Standard, Techno power	Distil wtr filed 25/02/21
45.	Main Building Dean Block	Techser (AMC 1/01/2021-1yr)	20		Techser	2Yrs		65	20		Amaron Quanta	2Yrs
46.	MCA	PoweJone (SPS)	10	16-08-13	Power jone Dharwad		80		20	16-08-13	Power Jone	Distil wtr toper up 25/01/21
47.	MCA	Cosmic	10	15-09-15	Adythya Marketing		50		20	28-11-18	Ojas, Techno power	Distil wtr toper

INFOCELL

												up 25/01 /21
48.	MCA	Emerson	6	12-12-05	Gravity India Hubli		40		16	16-08-13	Exide Gravity India	
49.	MECH CAD LAB NEW	EATON 9145	20	29-09-2014	Eaton Power Quality,Hubli.			42	24	29-09- 2014	Amaron Quanta	
50.	MECH CAD LAB OLD	DB-LN- 3300(Repla ced with Powernet)	20	27-08-10	Techno power Hubli			42	25	08-11-14	Quanta, Aditya Enterprices	AMC
51.	MECH UPS GF1	Eaton	30					100	30		Amaron Quanta, Innovative systems	2yrs
52.	MECH UPS GF 2	Eaton	30					100	30	21-07-17	Amaron Quanta, Techno power	
53.	MECH UPS SF 1	EATON 9145	20	29-09-2014	Eaton Power Quality,Hubli.			42	24	29-09- 2014	Amaron Quanta	
54.	MECH UPS SF 2	Powernet	10	17-10-16	Techno power Hubli		150				Invamaster, Techno power	Distile d wtr filed on 25/01 /21
55.	MECH,(ATHEN E)	Powernet	15	13-03-18	Techno power Hubli				20	13-03-18	Techno power Hubli	

INFOCELL

56.	Physics	Powernet	3	29-11-12	Techno power Hubli		50		4	29-11-12	Power build, Techno power	
57.	Placem ent	Cosmic	6	24-11-14	Connect communication		60		6	30-03-14	Ojas, Techno power Hubli	Distiled wtr filed on 25/02/212Yrs
58.	Civil Const. Cell	Luminus	1	10/06/19	Techno power Hubli	2Yrs	100		1	10/06/19	Techno power Hubli	2Yrs
59.	Kle Dwani	Numiric-3/1	6	05/05/2016	Tolas Electronics, Hubli			42	20	05/12/2020	Quanta Techno power Hubli	2 Yrs
60.												

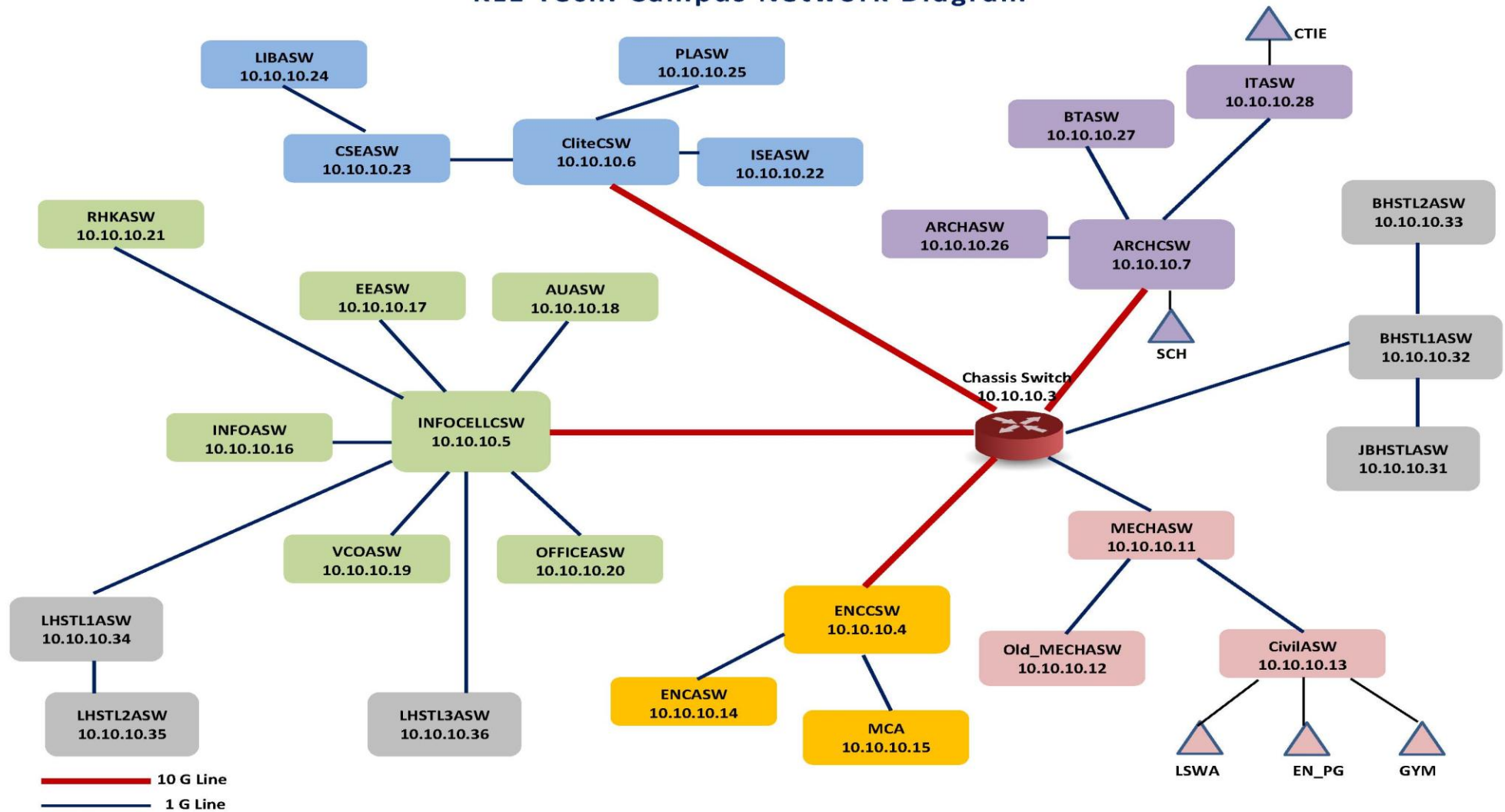
Software Information

Sl. No.	Dept.	Software	Type of Licence	Quantity	
1.	Infocell	Operating System	Academic	5000	
2.		Antivirus (Seqrite EPS)		1800	
3.	E&C	Cadence		60	
4.		Or-cad		25	
5.		Matlab		Unlimited	
6.		SVM based horizont detection engine Software		01	
7.		DSP Software		15	
8.		Or-cad (PCB Design) Software		01	
9.		Modeller Wireless Suite University		01	
10.		Xilinx Software	Free with Arnet Spartan 6 Kit	01	
11.		A&R	Solid Works	Network licence	300
12.			Catia 6	Network licence	500
13.	Master CAM		Network licence	100	
14.	Civil	ZWCAD		50	
15.		SAP and ETAbs	Complimentary Copy	20	
16.		CYPE		20	
17.		Primavera		06	
18.		Abacus		01	
19.		J-Octa		01	
20.		E&E	Proteus VSM Software		25
21.	DigSilent Power System Simulation			25	
22.	Matlab 2014a and Toolkit			05	
23.	OrCAD			10	
24.	Solid Thinking Embed			25	
25.	Matlab C1 Unit Two Years			Unlimited	
26.	SMSR	Tally 9 ERP Silver version		Single	
27.		Tally 9 ERP Gold version		Multi	

28.	CSE	Qualnet	Teaching Licence	30
29.		Qualnet	Research Licence	1
30.	MCA	Oracle 9i	Perpetual	5
31.		Tall Gold 9.0 Software Lock 772102251	Perpetual	
32.		IBM Rational Rose Suite	Perpetual	
33.		Turnitin : Anti Plagiarism Software		Campus License

INFOCELL

KLE Tech. Campus Network Diagram



INFOCELL

OFC CONNECTIONS

ISE

1	1	2	3	4	5	6		7	8	9	10	11	12		13	14	15	16	17	18
	CSE							ARCH												

2	1	2	3	4	5	6		7	8	9	10	11	12		13	14	15	16	17	18
	BIOTECH							PLACEMENT												

CSE

1	1	2	3	4	5	6		7	8	9	10	11	12		13	14	15	16	17	18
	INFOCELL							ISE							RHK					

2	1	2	3	4	5	6		7	8	9	10	11	12		13	14	15	16	17	18
	LIBRARY							PLACEMENT												

LIBRARY

1	1	2	3	4	5	6		7	8	9	10	11	12		13	14	15	16	17	18
	CSE																			

INFOCELL

PLACEMENT

1	1	2	3	4	5	6		7	8	9	10	11	12		13	14	15	16	17	18
	ISE																			

RHK

1	1	2	3	4	5	6		7	8	9	10	11	12		13	14	15	16	17	18
	CSE																			

INFOCELL

1	1	2	3	4	5	6		7	8	9	10	11	12		13	14	15	16	17	18
	CSE							ELECTRICAL							LADIES HOSTEL 2					

2	1	2	3	4	5	6		7	8	9	10	11	12		13	14	15	16	17	18
	MAIN BLDG 1 (OFFICE) / HUM							LADIES HOSTEL 3							E&C					

MAIN BLD 2 (VC OFFICE) → DIRECT OFC CONNECTION TO INFOCELL

E&C

1	1	2	3	4	5	6		7	8	9	10	11	12		13	14	15	16	17	18
	INFOCELL							DATA CENTRE							MCA					

INFOCELL

ELECTRICAL

1	1	2	3	4	5	6		7	8	9	10	11	12		13	14	15	16	17	18
	INFOCELL							AUTO												

MCA

1	1	2	3	4	5	6		7	8	9	10	11	12		13	14	15	16	17	18
	E&C																			

AUTO

1	1	2	3	4	5	6		7	8	9	10	11	12		13	14	15	16	17	18
	ELECTRICAL																			

ARCH

1	1	2	3	4	5	6		7	8	9	10	11	12		13	14	15	16	17	18
	DATA CENTRE							ISE												

2	1	2	3	4	5	6		7	8	9	10	11	12		13	14	15	16	17	18
	JR. BOYS HOSTEL							BIOTECH							SCHOLAR HOUSE					

INFOCELL

BIOTECH

1	1	2	3	4	5	6		7	8	9	10	11	12		13	14	15	16	17	18
	ARCH							IT							ISE					

IT

1	1	2	3	4	5	6		7	8	9	10	11	12		13	14	15	16	17	18
	BIOTECH																			

SCHOLAR HOUSE

1	1	2	3	4	5	6		7	8	9	10	11	12		13	14	15	16	17	18

DATA CENTRE

1	1	2	3	4	5	6		7	8	9	10	11	12		13	14	15	16	17	18
	OLD MECH							ARCH							E&C					

OLD MECH

1	1	2	3	4	5	6		7	8	9	10	11	12		13	14	15	16	17	18
	DATA CENTER							CIVIL												

INFOCELL

CIVIL

1	1	2	3	4	5	6		7	8	9	10	11	12		13	14	15	16	17	18
	EN_PG							LSWA							OLD MECH					

ENERGY PG

1	1	2	3	4	5	6		7	8	9	10	11	12		13	14	15	16	17	18
	GYMKHANA							CIVIL												

MAIN BLDG 1

1	1	2	3	4	5	6		7	8	9	10	11	12		13	14	15	16	17	18
	HUMANITIES																			

HUMANITIES

1	1	2	3	4	5	6		7	8	9	10	11	12		13	14	15	16	17	18
	INFOCELL							MAIN BLDG 1												

MAIN BLDG 2

1	1	2	3	4	5	6		7	8	9	10	11	12		13	14	15	16	17	18
								INFOCELL												

INFOCELL

SR1 BOYS HOSTEL

1	1	2	3	4	5	6		7	8	9	10	11	12		13	14	15	16	17	18
	SR2 BOYS HOSTEL							JR. BOYS HOSTEL												

SR2 BOYS HOSTEL

1	1	2	3	4	5	6		7	8	9	10	11	12		13	14	15	16	17	18
	SR1 BOYS HOSTEL																			

JR. BOYS HOSTEL

1	1	2	3	4	5	6		7	8	9	10	11	12		13	14	15	16	17	18
	ARCH							SR1 BOYS HOSTEL												

LADIES HOSTEL 1

1	1	2	3	4	5	6		7	8	9	10	11	12		13	14	15	16	17	18
	INFOCELL							LADIES HOSTEL 2												

INFOCELL

LADIES HOSTEL 2

1	1	2	3	4	5	6		7	8	9	10	11	12		13	14	15	16	17	18
	LADIES HOSTEL 1																			

LADIES HOSTEL 3

1	1	2	3	4	5	6		7	8	9	10	11	12		13	14	15	16	17	18
	OFC DIRECT																			